

# PrimeTerminal

## Tools – Analytical Tools

### Decision Supporting Tools For Screening, Technical And Scenario Analysis (available for PrimeTerminal Basic & Advisor Editions)

Technical analysis, financial analytics tools and alerting tools for different asset classes complement the market data and support your decisions in your daily work.

#### ■ Technical Analysis With Interactive Charts

Additional to the Chart Clip in PrimeTerminal, **Interactive Charts** offers indepth and sophisticated technical analysis coupled with user specific watchlist handling.



Main features are:

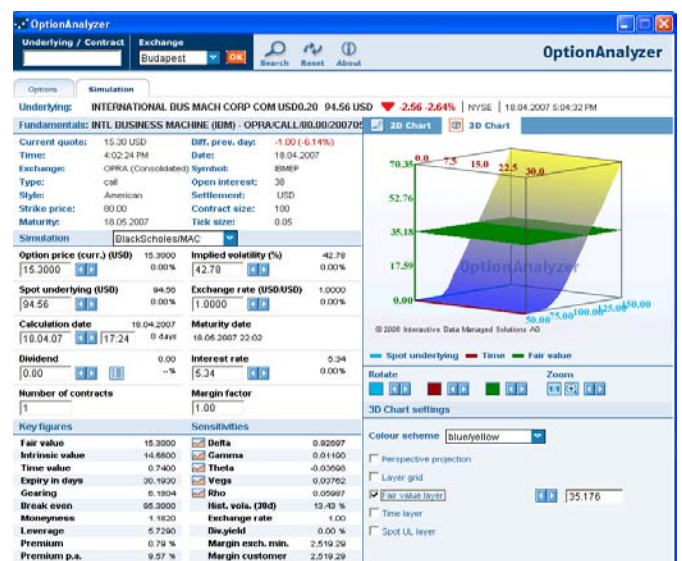
- Chart any instrument in line, step, bar, candlestick or mountain charts.
- Select technical analysis charts from over 30 common indicators to indicate or confirm trends.
- Select the time period, frequency, chart style and linear, percentage or logarithmic chart scale for any desired level of detail.
- Add relevant benchmark charts to the main chart area.
- Analyze, edit, annotate, zoom, save, print and e-mail any chart.

#### ■ Derivatives Analysis With Warrant Analyzer And Option Analyzer

The **Option Analyzer** provides a quick overview of the options market in a heat map and allows you to focus on individual contracts and analyze them in various investment scenarios.

Parameters such as option price, underlying spot price, implied volatility and others can be calculated for future projections.

Charts illustrate the relationship of calculation parameters and results, e.g. the underlying price and fair value over the remaining time.

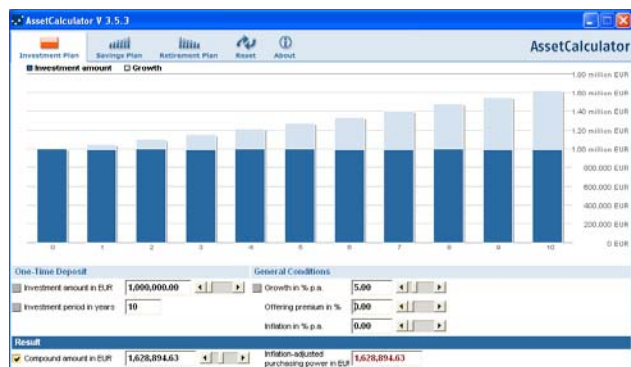


#### Option key values, sensitivity analysis and 2-D/3-D Charts for visualization and presentation

The **Warrant Analyzer** provides a similar simulation panel as the Option Analyzer, but is rather specialized on Warrants.

## ■ Investment Plans, Savings Plans and Retirement Plans With The Asset Calculator

The **Asset Calculator** helps to calculate earnings, monthly savings amounts or investment periods, depending on other parameters for investment, savings and retirement plans.

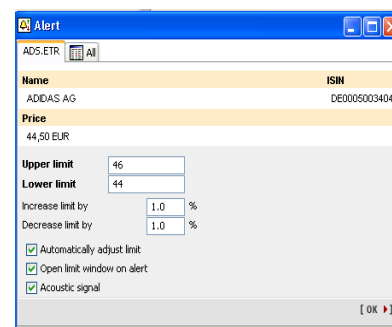


## ■ Real-time And Historical FX Crossrates With The Currency Calculator

The **Currency Calculator** helps to re-dominate an amount into a foreign currency, for example to convert 1,000,000.00 CHF to USD. The currency conversion can be done for 21 currencies at spot or at any historical date back to January 1999.

## ■ Keep An Eye On The Market With The Alert Clip

Use the **Alert Clip** to closely monitor selected instruments and to be warned of market movements that may require immediate attention or action.



Alerts can be set on instrument prices crossing upper or lower limits. Limit minders may be on absolute level. An automatic adjustment of the limit in percent can be set.

## ■ Export Data To MICROSOFT® OFFICE EXCEL

PrimeTerminal offers diverse capabilities to export real-time streaming, fundamental and historical data to MICROSOFT® OFFICE EXCEL for further analysis.

- Links using DDE technology
- XLPort using .NET technology (MICROSOFT® OFFICE EXCEL's RTD() function) and wizards supporting the data export
- Exporting intraday and interday history from Chart Clips and Times & Sales Clips.

### Frankfurt

Sandweg 94  
60316 Frankfurt/Main  
Germany  
Tel: +49 (0)69 50 50 30 0  
Fax: +49 (0)69 50 50 30 505

### Helsinki

Luotikatu 13  
00160 Helsinki  
Finland  
Tel: +358(0)9 6860 6717  
Fax: +358(0)9 6860 6710

### London

Fitzroy House, 13-17 Epworth Street  
London EC2A 4DL  
United Kingdom  
Tel: +44 (0)20 78258000  
Fax: +44 (0)20 7825 7701

### Madrid

C/ María de Molina 37 bis  
28006 Madrid  
Spain  
Tel: +34 (91)7452105  
Fax: +34 (91)7452106

### Milan

Via Mauro Macchi, 44  
20124 Milan  
Italy  
Tel: +39 02 671915 1  
Fax: +39 02 671915 40

### New York

100 William Street, 17th Floor  
New York, NY 10038  
United States of America  
Tel: +1 212 269 6300  
Fax: +1 212 771 6987

### Paris

9, Rue de Téhéran  
75008 Paris  
France  
Tel: +33 (0)156695070  
Fax: +33 (0)156695079

### Zurich

Neugasse 10  
8005 Zurich  
Switzerland  
Tel: +41(0)44 276 4611  
Fax: +41(0)44 276 4601

www.interactivedata-ms.com · info-ms@interactivedata.com

Interactive Data<sup>SM</sup> and the Interactive Data logo are service marks of Interactive Data Corporation.

### Limitations

This document is provided for informational purposes only. The information contained in this document is subject to change without notice and does not constitute any form of warranty, representation, or undertaking. Nothing herein should in any way be deemed to alter the legal rights and obligations contained in agreements between Interactive Data (Europe) Ltd and its clients relating to any products or services described herein. Nothing herein is intended to constitute legal, tax or other professional advice. Interactive Data (Europe) Ltd makes no warranties whatsoever, either express or implied, as to merchantability, fitness for a particular purpose, or any other matter. Without limiting the foregoing, Interactive Data (Europe) Ltd makes no representation or warranty that any data or information (including, but not limited to, evaluations) supplied to or by it are complete or free from errors, omissions, or defects. © 2007 Interactive Data (Europe) Ltd [FTS<sup>SM</sup>] and [connect] are trademarks of Interactive Data (Europe) Ltd. Other products, services, or company names mentioned herein are the property of, and may be the service marks or trademarks of, their respective owners.